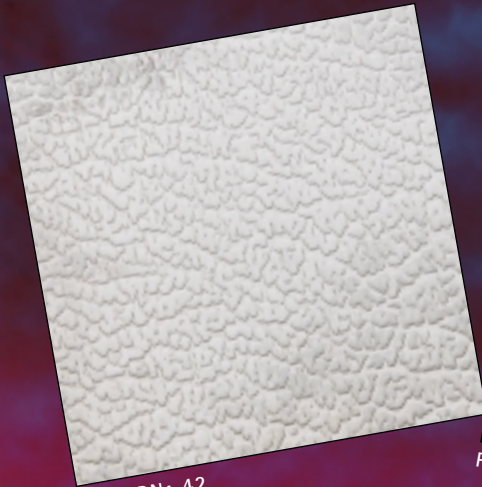


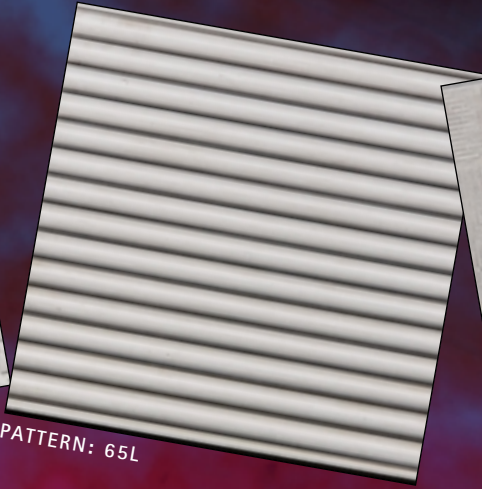


METEX
FLOORING SYSTEMS LIMITED

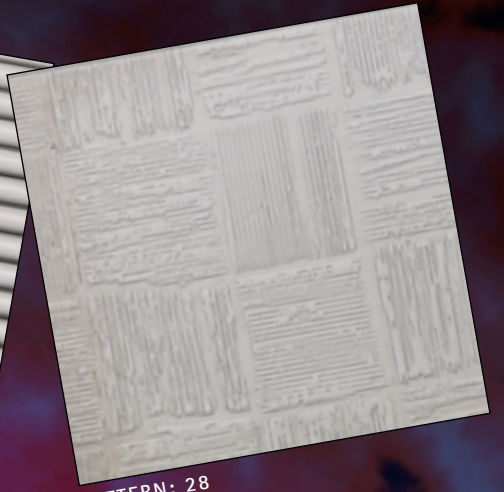
**Stainless Steel tiles
– forged with
imagination**



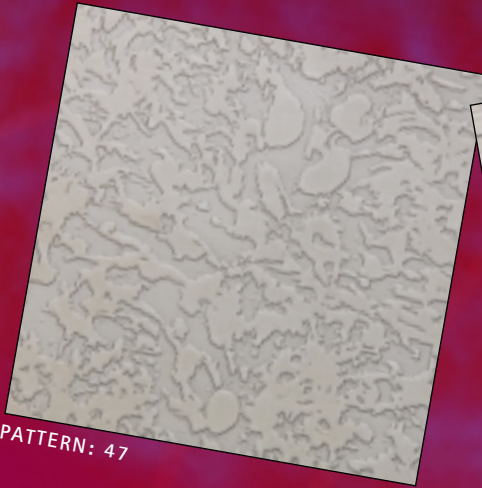
PATTERN: 42



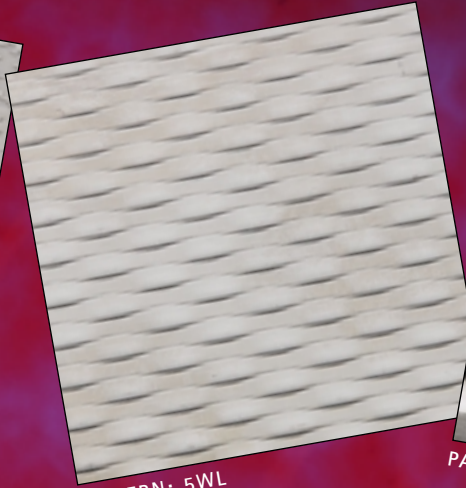
PATTERN: 65L



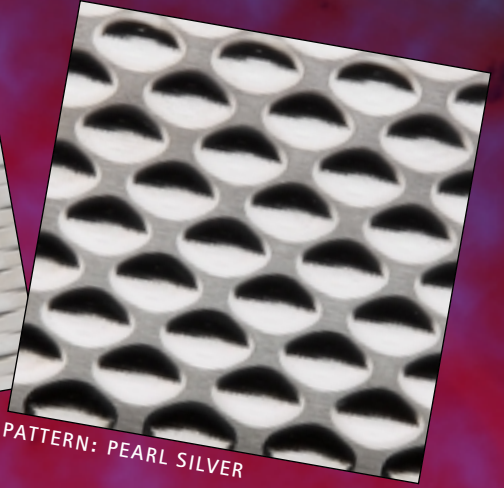
PATTERN: 28



PATTERN: 47



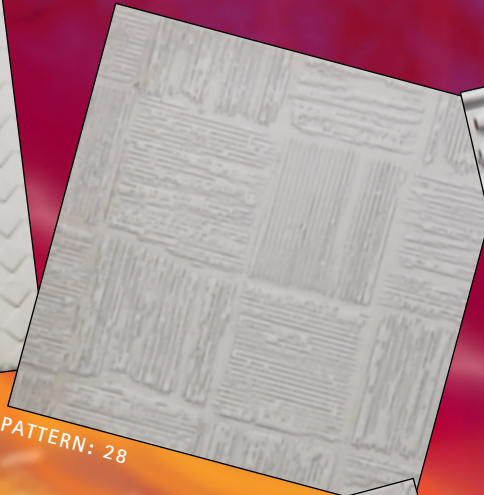
PATTERN: 5WL



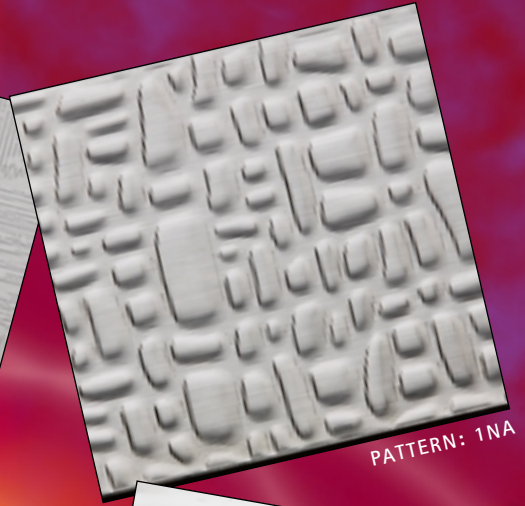
PATTERN: PEARL SILVER



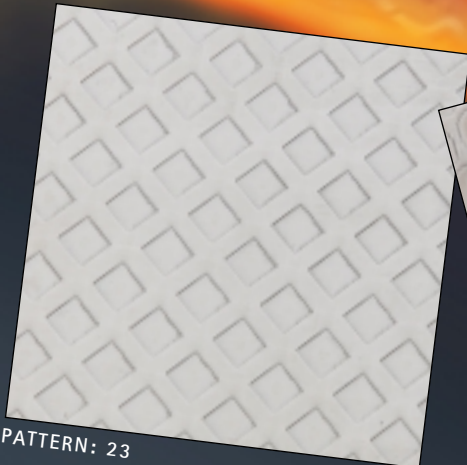
PATTERN: 22



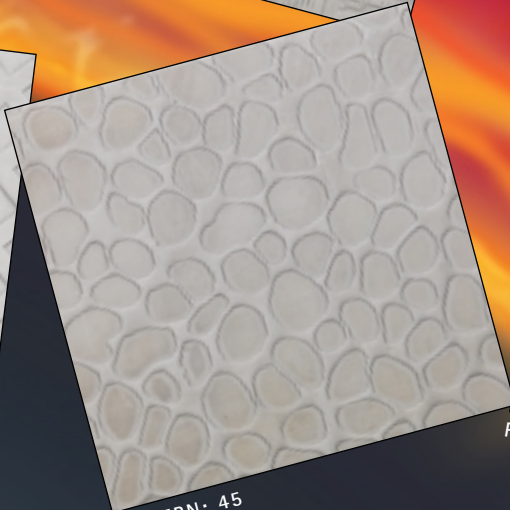
PATTERN: 28



PATTERN: 1NA



PATTERN: 23



PATTERN: 45



PATTERN: 10WG



YOUR IMAGINATION IS THE ONLY LIMIT

METEX STAINLESS STEEL FLOORING SYSTEMS

Distinctive flooring for specialist projects –
available in hundreds of different styles/colours and finishes

Whether specifying for a new-build or refurbishment project, architects and designers will quickly appreciate the aesthetic, financial and practical advantages of Metex Flooring Systems. If visual impact is needed while providing a durable, low-maintenance surface, these slip-resistant metal tiles provide an ideal way of adding "something different" to a whole range of locations:

Entrances/foyers

First impressions are the best impressions.

Dance floors

Design a smart, hardwearing, low-slip, damage-resistant floor.

Exhibition stands

The interlocking design and rubber insulation adds extra comfort and makes this an ideal way of presenting a striking appearance, yet can be quickly installed/uninstalled.

Showrooms

Enhance your product display area.

Food preparation areas

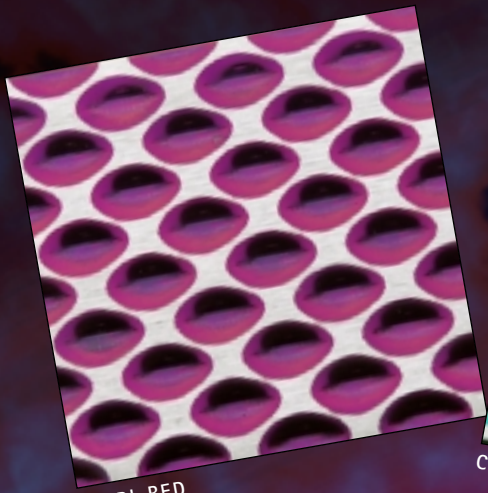
The non-porous and slip-resistant nature of these stainless steel tiles is ideal where demanding standards of hygiene are required.

Operating theatres

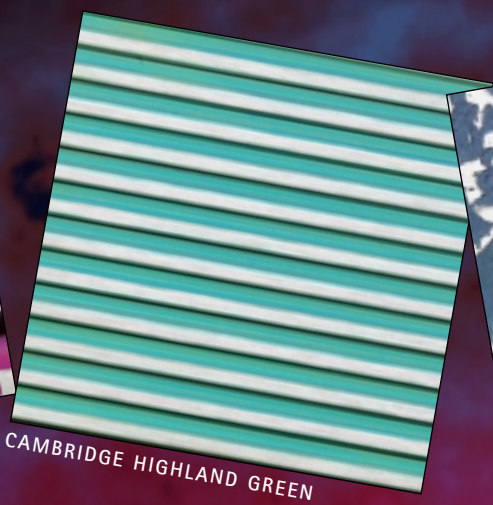
Ideal for any hi-tech location where high standards of hygiene are essential.

Domestic

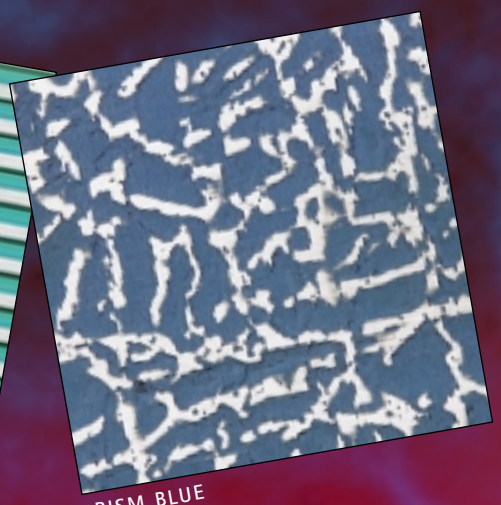
Select a striking floor to complement that prestigious bathroom or kitchen.



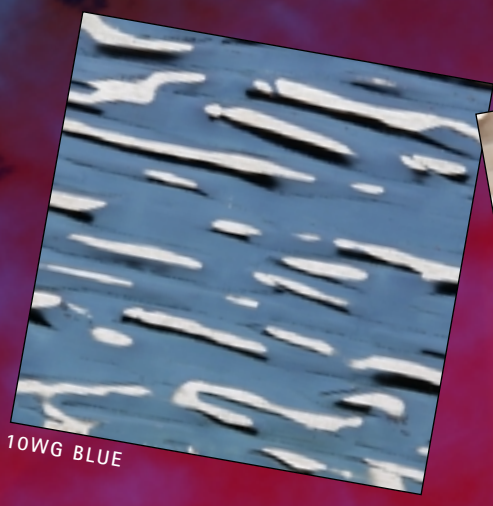
PEARL RED



CAMBRIDGE HIGHLAND GREEN



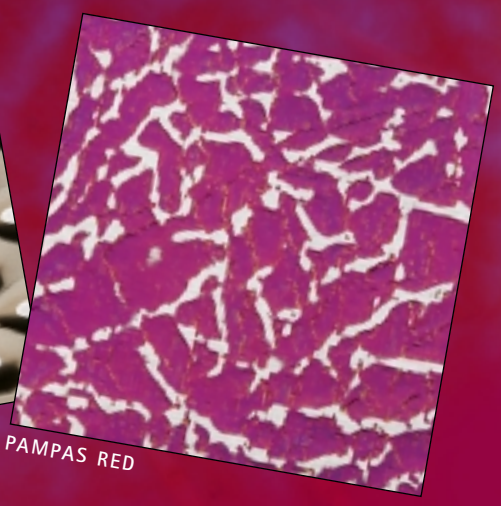
PRISM BLUE



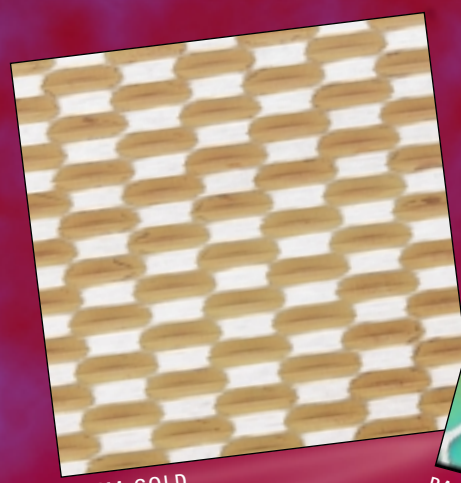
10WG BLUE



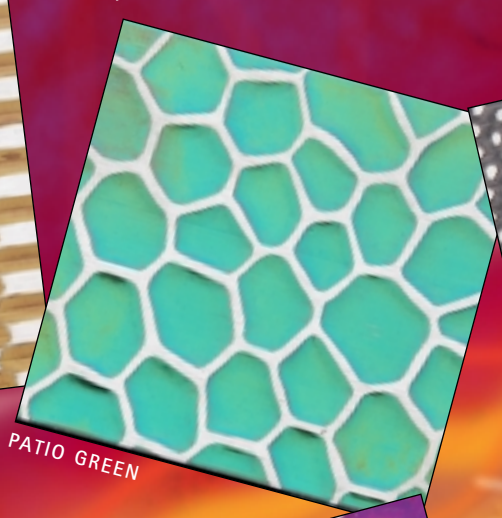
PAGODA BRONZE



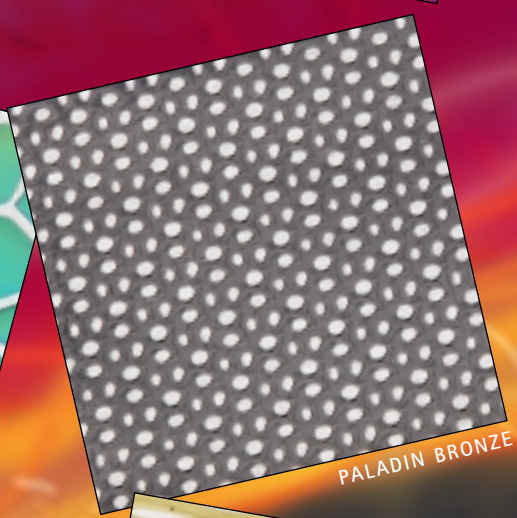
PAMPAS RED



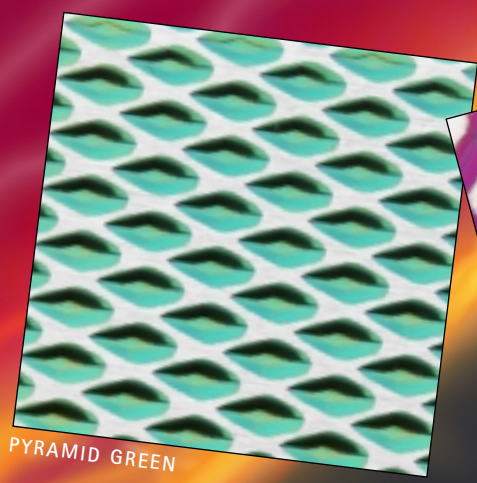
PRISM GOLD



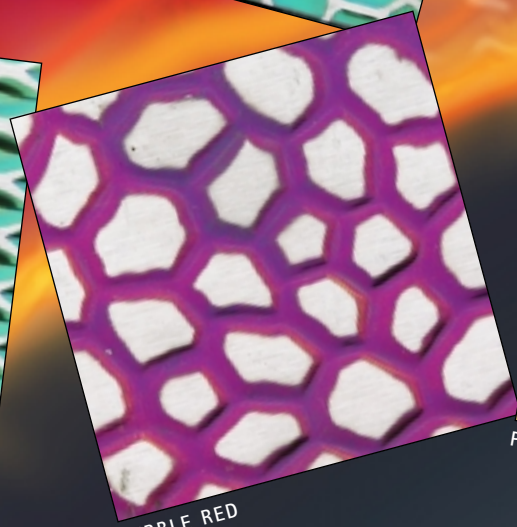
PATIO GREEN



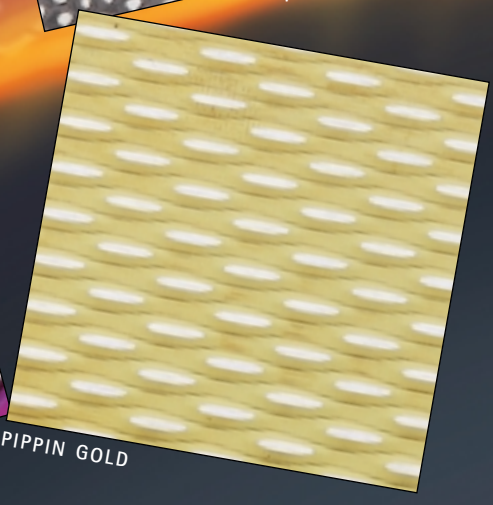
PALADIN BRONZE



PYRAMID GREEN



PEBBLE RED



PIPPIN GOLD



The Metex flooring system has many advantages over conventional hardwearing surfaces.

- This textured stainless steel flooring system is by far the easiest product to keep clean and will outlast all other comparable flooring systems – with minimal maintenance.
- The unique cold-rolling process creates real 3D patterns, increasing the slip-resistance of the surface (test data available on request). The patterned surface is difficult to damage, hides dents and scratches and is virtually vandal-proof. All of these features extend the life of the flooring, reducing the cost of ownership over the long term.
- These textured surfaces break up light patterns and so overcome the 'oil canning' effect that can so often spoil the appearance of flat metal surfaces.
- Trading can usually continue while the new surface is laid because the installation of the rubber moulded tiles is low-tech, quick and easy – almost no preparation work is required. Old cracks/blemishes in marble/ceramic tiles/wood can be covered without further damage to the surface. Curved edges and finishing strips are simply cut with a band saw on site.
- The use of these tiles across a broad range of architectural and industrial applications means that demands on both design and material performance are becoming more precise.
- Metex have a full in-house fabrication workshop and can offer this service to help you meet the criteria that is required to easily produce unique and bespoke designs.

Low Maintenance

Maintaining a clean, polished appearance is quite easy – the stainless steel pattern is almost self-cleaning. All that is normally required is a wipe with a damp towelling cloth, followed by a dry wipe. A small quantity of Fairy Liquid (or similar) can be used as a degreasing agent where necessary.

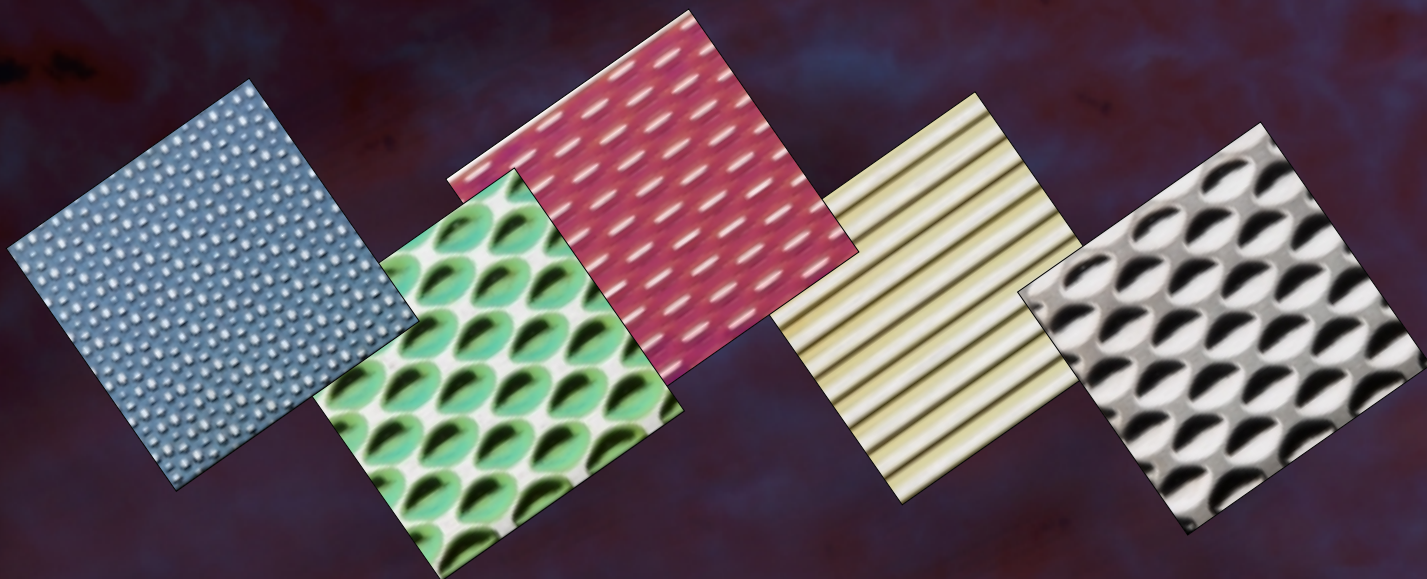
EASY REMOVAL OF STUBBORN MARKS	TREATMENT
Oil/Grease	Use soap and water/solvent
Stubborn Stains/discolouration	Use mild scouring powders followed by clean water rinse and dry rub.
Tannin Stains	Use washing soda (sodium carbonate in hot water), rinse with clean water and dry rub
Baked on carbon	Use solution of 10% nitric acid. Rinse with clean water and dry rub.
Paint	Use paint solvent (apply with soft nylon brush). Rinse with clean water and dry rub

Further advice can be obtained from our technical support department

Technical specification

The METEX Stainless Steel Flooring System is an interlocking, loose-lay, composite flooring tile. The tile consists of textured stainless steel laminated on to Zintec high-resistant plate which is moulded into a commercial rubber polymer base.

CONSTRUCTION	DIMENSIONS
1mm grade 304 stainless steel	Overall Dimension 460mm x 460mm square (18" x 18" square)
2mm BS6687 high-resistance Zintec metal plate	4.8 tiles = 1 sq. metre 4.0 tiles = 1 sq. yard
Commercial black rubber (±5) 70 hardness	Weight per square metre = 27Kg approx. Total thickness of tile = 9mm approx.



Metex flooring systems provide an extensive backup service to ensure that engineering performance is maintained across the broad range of available designs.

In addition to "off the shelf" solutions, we offer a bespoke service that can offer the ultimate in imaginative and hardwearing surfaces. If your project needs embossed patterns on stainless steel, coloured stainless steel or etched finishes on mirrored stainless steel – we can provide what you need.

Customer satisfaction

This is our first priority and we will continue with our extensive development and investment programme to enable us to develop new products which will allow us to remain at the forefront of metal surface technology. This means that we may make alterations to the described products and services from time to time without prior notice or obligation.

With such a wide range of patterns and colour permutations – your imagination is the only limit when designing the ultimate new floor.



METEX FLOORING SYSTEMS LIMITED

UNIT 2 • SWAN LANE IND. EST. • HINDLEY GREEN • WIGAN WN2 4HD

Tel: 01942 523700 Fax: 01942 525303

Email: info@metexflooring.co.uk Web: www.metexflooring.co.uk

This brochure has been prepared for the purpose of advertising the Metex product range and services. The contents and illustration contained within this brochure are for reference purposes only and so for detailed, accurate and up-to-date information on finishes, samples and manufacturing parameters please contact our sales office.